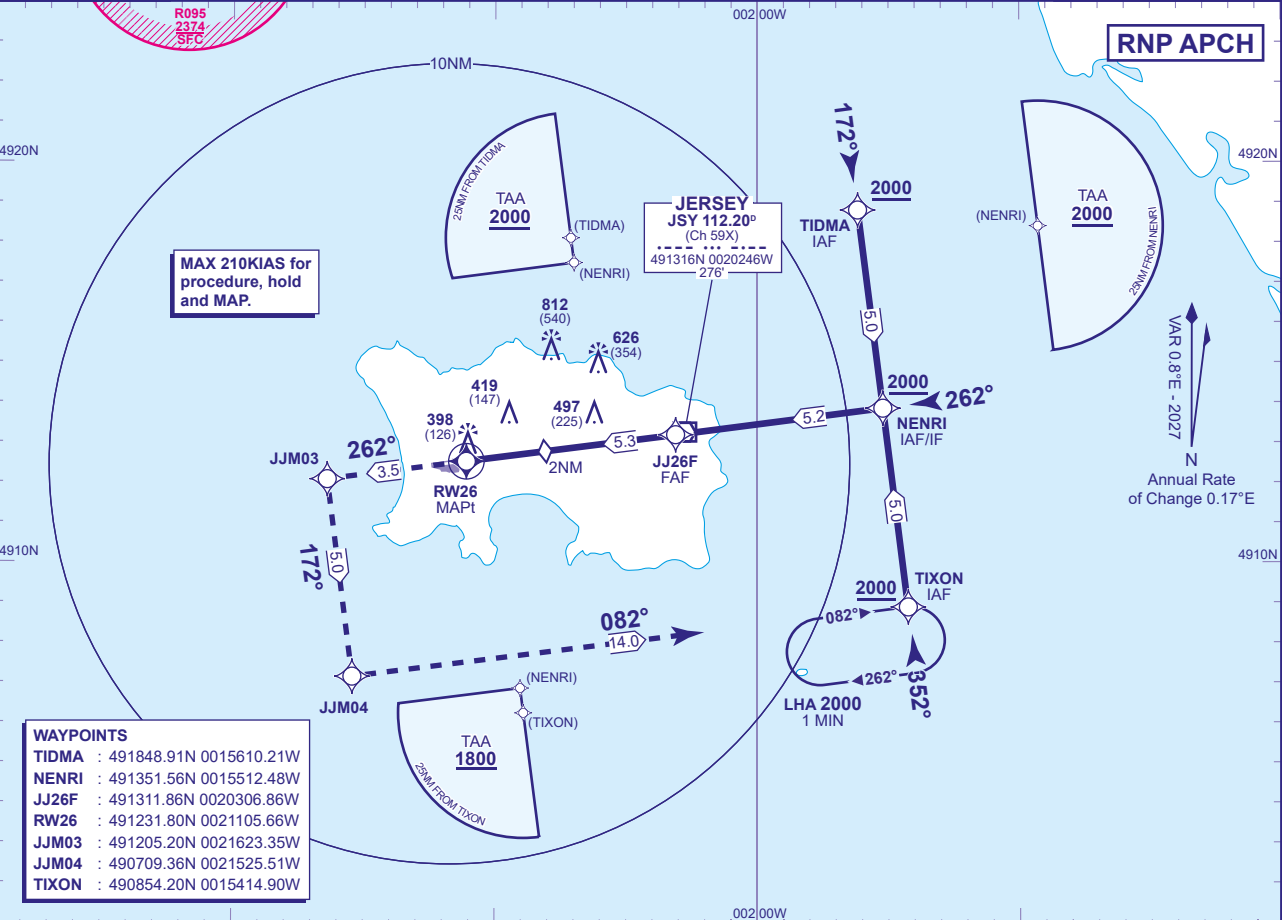


INSTRUMENT APPROACH CHART - ICAO

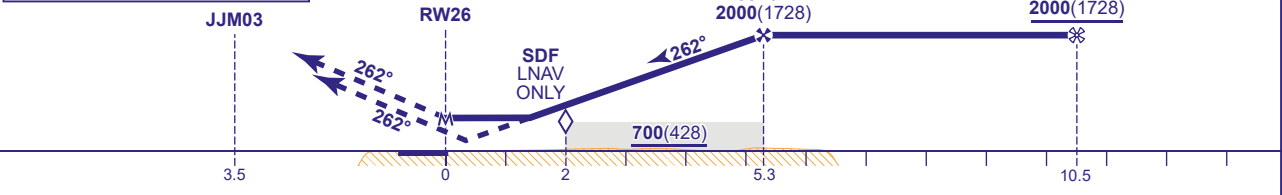
JERSEY RNP RWY 26

<div><div><div>19°08'19°09'19°19°09'19°19°09'</div><div>MSA 25NM ARP</div></div><div><div>R095</div><div>2374</div><div>SFC</div></div></div>	ATC	125.205, 120.455	JERSEY CONTROL	AD ELEVATION	277	<div><div>RNP</div><div>RWY 26</div><div>(ACFT CAT A,B,C,D)</div></div> <div>EGNOS</div> <div>CH 63839 E26A</div> <div>MIN TEMP -5°C</div> <div>TRANSITION ALTITUDE 5000</div>
	APP	120.305, 118.555	JERSEY APPROACH	THR ELEVATION	272	
	TWR	119.455	JERSEY TOWER	OBSTACLE ELEVATION	812 AMSL (540) (ABOVE THR)	
		121.905	JERSEY GROUND			
	ATIS	134.680	JERSEY INFORMATION	BEARINGS ARE MAGNETIC		



RECOMMENDED PROFILE LPV/VNAV Vertical Path Angle 3.0° (LNAV 5.24%), 320FT/NM					
NM to RW26	5	4	3	2 (SDF)	1
ALT(HGT)	1910(1638)	1600(1328)	1280(1008)	960(688)	640(368)

**MAPt (LNAV): RW26**  
Continuous climb to 3000. Initially climb straight ahead to JJM03 then turn left to JJM04 and TIXON to join the hold or as directed by ATC.



Aircraft Category		A	B	C	D	Rate of descent	G/S KT	160	140	120	100	80
OCA (OCH)	LPV	472(200)	472(200)	472(200)	472(200)		FT/MIN	850	740	640	530	430
	LNAV/VNAV	580(308)	580(308)	580(308)	580(308)							
	LNAV	652(380)	652(380)	652(380)	652(380)							
VM(C)OCA (OCH AAL)	Total Area	770(493)	770(493)	1210(933)	1210(933)							
	South of RWY 08/26	770(493)	770(493)	1030(753)	1030(753)							

**NOTE** Aircraft will normally be required to hold not lower than 3000.

**CHANGE (2/26): JERSEY CONTROL (SECONDARY) FREQUENCY.**